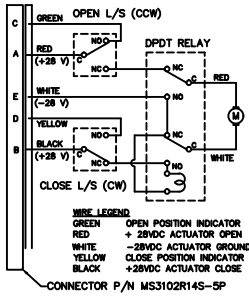
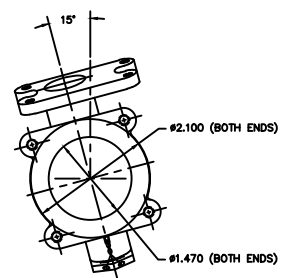
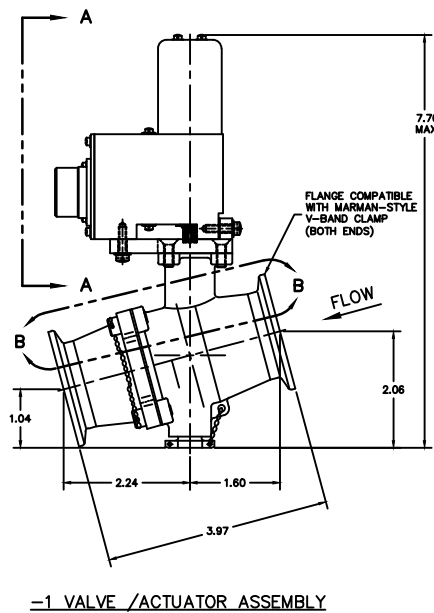
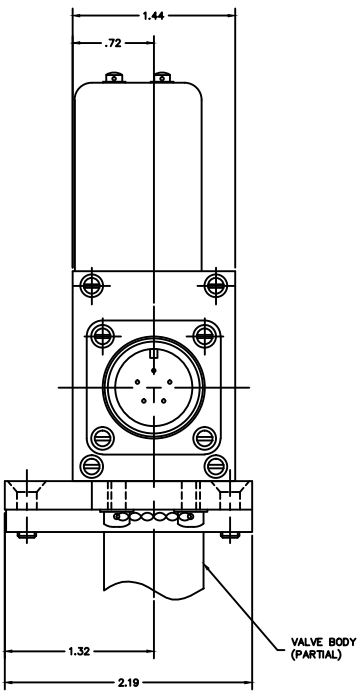
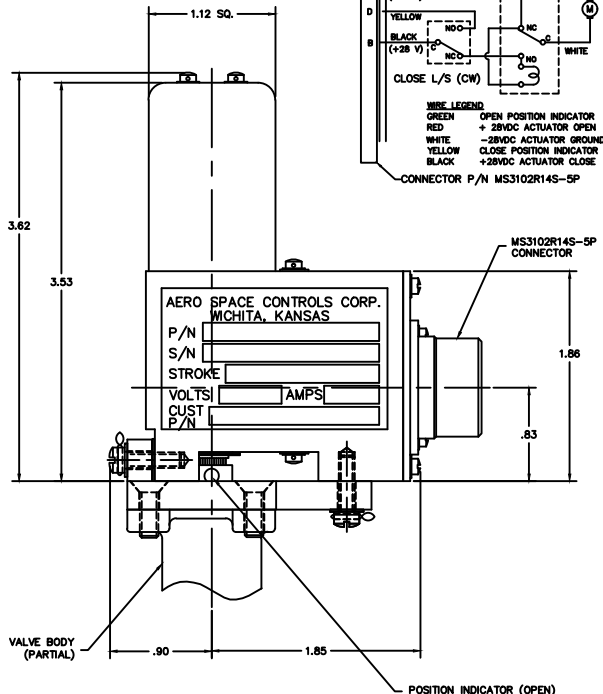


NOTICE
 This drawing is a part of the proprietary article shown elsewhere. It is the property of Aero Space Controls Corporation, Wichita, Kansas. It is to be used only for the specific purpose and shall not be disclosed to any unauthorized person or incorporated in any other project.

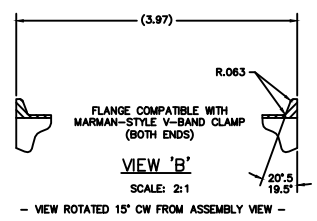


REVISIONS				
C.O. NO.	REV.	REVISION DESCRIPTION	DATE	APPD.



VIEW A-A
 SCALE: 2:1

- NOTES CONTINUED:
- VOLTAGE: 18-30 VOLTS
 - STALL CURRENT: 2.0 AMPS MAX.
 - RUNNING CURRENT: .4 AMPS MAX.
 - DUTY CYCLE: CONTINUOUS OR INTERMITTENT
 - TIMING FOR CYCLE (90°): 2-5 SECONDS
 - FLOWING MEDIA: BLEED AIR
 - AMBIENT OPERATING TEMPERATURE: -40°F TO +160°F
 - FOR ASSEMBLY SEE 'ASC' DRAWING 6007101



-1		SHUTOFF FLANGE VALVE		MATERIAL		MATERIAL SPEC.		FINISH		FINISH SPEC.	
QTY.	ITEM	SIZE	PART NUMBER	DESCRIPTION	MATERIAL	MAT'L SPEC.	FINISH	FINISH SPEC.			
LIST OF MATERIALS											
DIMENSIONAL SYMBOLS PER ASME Y14.5		UNLESS OTHERWISE SPECIFIED		SIGNATURES		DATE		AERO SPACE CONTROLS CORPORATION WICHITA, KANSAS SHUTOFF FLANGE VALVE - MOTOR DRIVEN -			
/ FLATNESS - STRAIGHTNESS < ANGLARITY J PERPENDICULARITY // PARALLELISM ⊙ CONCENTRICITY ⊕ TRUE POSITION ○ CIRCULARITY (ROUNDNESS) = SYMMETRY ⊕ (MMC) MAXIMUM MATERIAL CONDITION (RFS) REGARDLESS OF FEATURE SIZE		1. DIMENSIONS ARE IN INCHES - TOLERANCES ON - FRACTIONS ± 1/16 ANGLES ± 0' 30" XX DEC ±.030 DRILL HOLES AND 10387 XXX DEC ±.010 2. SURFACE ROUGHNESS PER MIL-STD-10 3. REMOVE BURRS & BREAK SHARP EDGES .010 MAX. 4. INTERNAL RADI .005 TO .015 5. STRAIGHT SCREW MIL-S-7742 TAPERED PIPE MIL-P-7105		DR. D. ORTH CHK. ENGR. APPD. D. SIMON NEXT ASSY: 6. ALL DIMENSIONS BEFORE PLATING		8-25-09 2-16-10					